



JAPANESE LANGUAGE COURSE

1

N5
(30 SESSIONS)

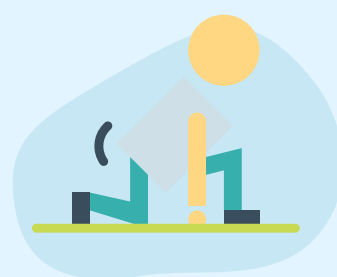
2

N4
(45 SESSIONS)

N5 (30 SESSIONS)

1 BASIC LEVEL - BEGINNERS

In this introductory session, learn the basics of language and sentence building using simple alphabet and day-to-day life words.

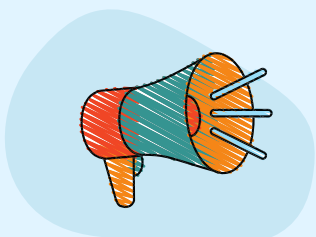


2 BASIC GRAMMATICAL RULES

You will learn about greetings, numbers, articles, gender, verbs, adjectives, vocabulary, preposition, and complete parts of speech.

3 WORKSHEETS

This module includes fun worksheets and activities which includes reading and writing about yourself. It helps in sentence building as well as boosts confidence.



4 DOUBT CLEARING SESSIONS

doubt clearing sessions are included as an intrigue part of this course in order to understand the language better and become more fluent.

5 ASSESSMENT SESSIONS

Assessments sessions helps teacher to understand your learning. Teacher will assess your understanding and application of the language.





N4 (45 SESSIONS)

1 ELEMENTARY LEVEL

In these sessions, learn the elementary level of language and sentence building using simple alphabet and day-to-day life words.



2 ADVANCE GRAMMATICAL RULES

You will learn about greetings, numbers, articles, gender, verbs, adjectives, vocabulary, preposition, and complete parts of speech.

3 WORKSHEETS

This module includes fun worksheets and activities which includes reading and writing about yourself. It helps in sentence building as well as boosts confidence.



4 DOUBT CLEARING SESSIONS

Doubt clearing sessions are included as an intrigue part of this course in order to understand the language better and become more fluent.

5 ASSESSMENT SESSIONS

Assessments sessions helps teacher to understand your learning. Teacher will assess your understanding and application of the language.



Book a Free Trial Today!!!

contactus@kidsinfinitelarning.com

(+91) 8968809206 (India)

(+1) 980-899-7548 (USA)

www.kidsinfinitelarning.com

